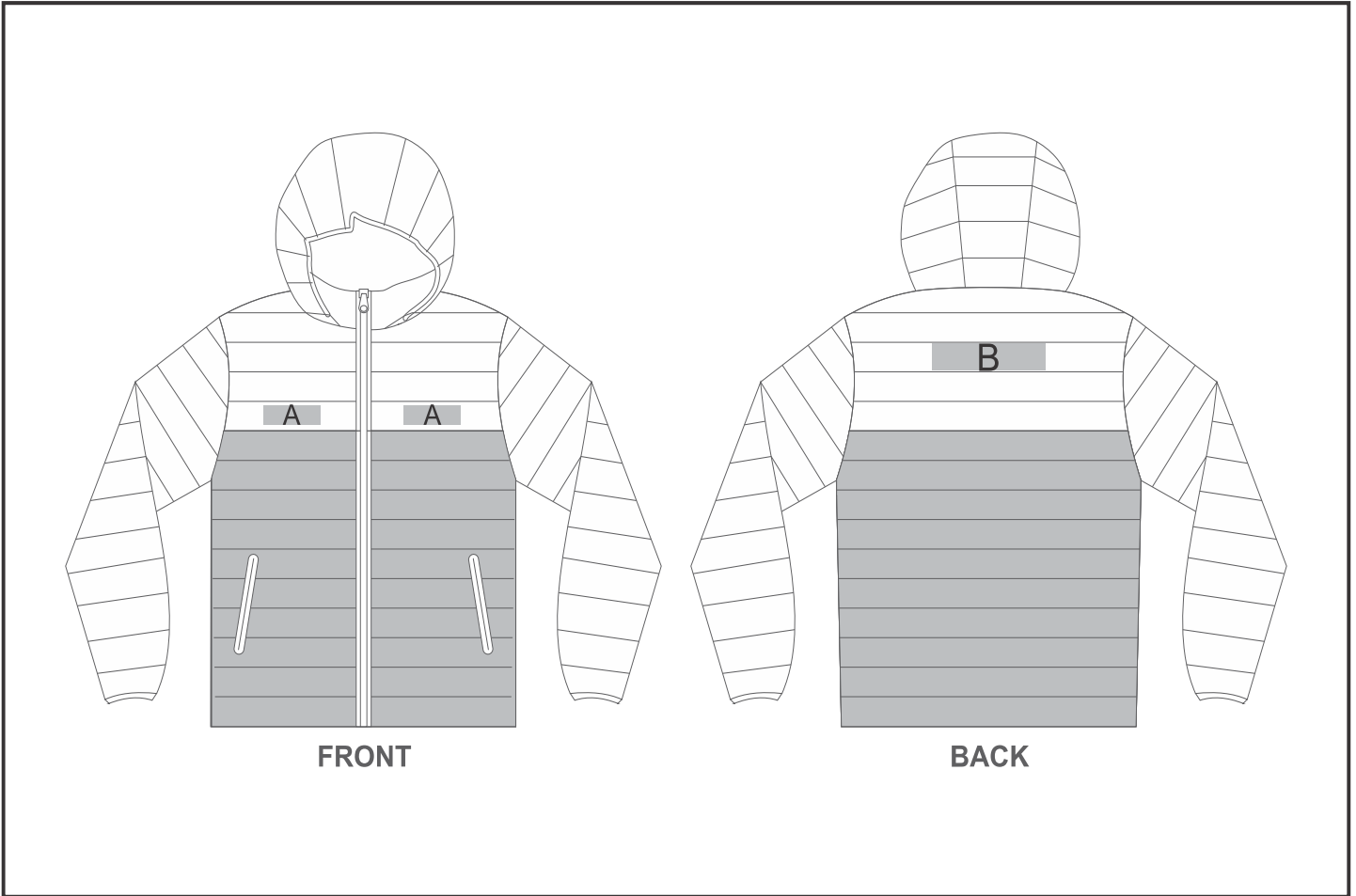


# SLAZ-11423

## Ladies Kyoto Two-Tone Jacket



### Need to know:

- Cannot guarantee a 100% straight branding on any clothing item with check or stripe detail.
- The panels on the garment are inconsistent from Small to XL.
- The logo will be branded in the closest left/right chest and back panel, to the standard left/right chest and back position.

### Branding Options:

Position	Branding Method (Branding Code)	No. of Colours	Dimension
A	Embroidery (EM-CLOTHING)	N/A	100mm wide x 40mm high
B	Embroidery (EM-CLOTHING)	N/A	200mm wide x 40mm high